

digital
PRODUCT LISTING CATALOG | 2018



PRODUCT LISTING TABLE OF CONTENTS

Please contact Shakespeare at TOLL FREE 888-399-7117 for immediate product assistance.

Page numbers are linked to specific page

PAGE 2	Tinplate Inserts / Bushings — 3/4"
PAGE 3	Tinplate Inserts / Bushings — 1.0312"
PAGE 4	Tinplate Inserts / Bushings — 1-1/2"
PAGE 5	Tinplate Inserts / Bushings — 2"
PAGE 6	Tinplate Inserts / Bushings — 2"
PAGE 7	Safety Backs
PAGE 8	Pronged Inserts / Spiders
PAGE 9	Zinc Flanges
PAGE 10	Knurl Nuts / Inserts
PAGE 11	Hex Nuts / Inserts
PAGE 12	Arbors and Screws
PAGE 13	Roll Over Tools
PAGE 14	Hub Flange Kits
PAGE 15	Hubbing Machine Systems
PAGE 16	Vertical Drill Machine Systems

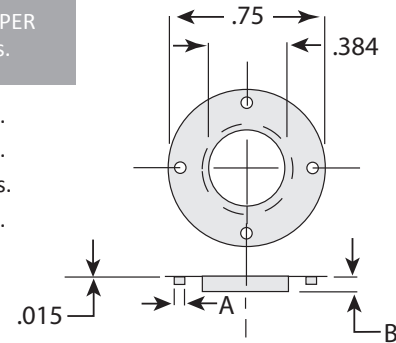


3/4" TINPLATE INSERTS / BUSHINGS

Used for Hat Wheels

page 2 | [return to table of contents](#)

PART NO.	CENTER HOLE DIAMETER	EXTRUDE HOLES DIAMETER - A	HUB HEIGHT - B	WEIGHT PER 1,000 pcs.
H - 1	.384 - .386	.031	.058 - .062	3.3 lbs.
H - 2	.384 - .386	.053	.120 - .125	3.7 lbs.
H - 3	.384 - .386	.090	.170 - .187	4.25 lbs.
H - 4	.384 - .386	.090	.230 - .250	4.9 lbs.



- All 3/4" H Series inserts are made of .0150 thick Soft Temper Steel with Electrolytic Tinplate Finish.
- Parts are concentric within .010 with < .005 burr.
- Special build-to-order sizes are available on request.

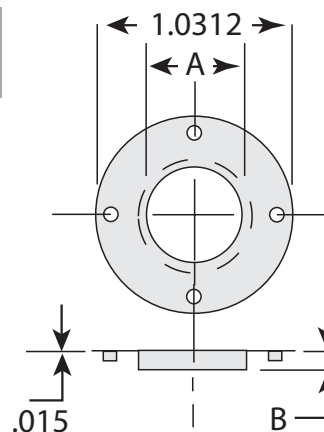


1.0312" TINPLATE INSERTS / BUSHINGS

Used for Hat Wheels

page 3 | [return to table of contents](#)

PART NO.	CENTER HOLE DIAMETER - A	HUB HEIGHT - B	WEIGHT PER 1,000 pcs.
U - 1	.632 - .635	.065 - .075	2.5 lbs.
U - 2	.632 - .635	.115 - .125	2.5 lbs.
U - 3	.632 - .635	.177 - .187	2.5 lbs.
U - 4	.632 - .635	.240 - .250	3.5 lbs.



- All 1.0312" U Series inserts are made of .0150 thick Soft Temper Steel with Electrolytic Tinplate Finish.
- Parts are Concentric within .010 with < .005 burr.
- Special build-to-order sizes are available on request.

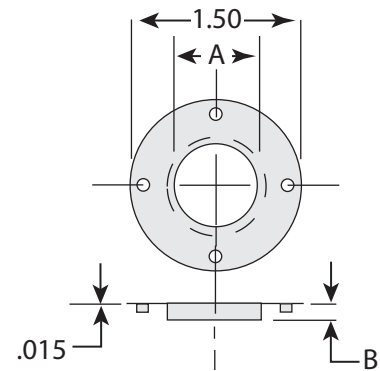


1.5" TINPLATE INSERTS / BUSHINGS

Used For Depressed Center Wheels, Cut-Off Wheels, Grinding Wheels and Flap Discs

page 4 | [return to table of contents](#)

PART NO.	CENTER HOLE DIAMETER - A	HUB HEIGHT - B	WEIGHT PER 1,000 pcs.
A - 1	.505 - .509	.060 - .070	6.9 lbs.
A - 2	.630 - .633	.060 - .070	6.5 lbs.
A - 3	.755 - .758	.060 - .070	6.5 lbs.
A - 1H	.505 - .509	.040 - .050	6.9 lbs.
A - 2C	.630 - .633	.110 - .120	6.5 lbs.
B - 1	.883 - .885	.115 - .125	6.5 lbs.
B - 1C	.883 - .885	.154 - .164	6.5 lbs.
B - 2	.883 - .885	.168 - .188	6.5 lbs.
B - 3	.883 - .885	.220 - .250	6.5 lbs.
BA - 1	.883 - .885	.053 - .063	5.1 lbs.
BA - 6	1.005 - 1.009	.085 - .095	5.5 lbs.
BA - 7	1.005 - 1.009	.115 - .125	5.5 lbs.



- Four 1/8" diameter equally spaced rough extruded nail holes on 1.187 bolt circle.
- (BA-6 & BA-7) Four 3/32" diameter equally spaced rough extruded nail holes on 1.187 bolt circle.
- All 1.5 inch A and B Series Inserts are made of .015 thick Soft Temper Steel with Electrolytic Tinplate Finish.
- Parts are concentric within .01 with <.005 burr.
- Special build-to-order sizes are available on request.

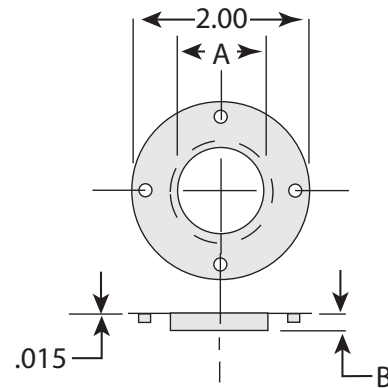


2" TINPLATE INSERTS / BUSHINGS

Used For Depressed Center Wheels, Cut-Off Wheels, Grinding Wheels and Flap Discs

page 5 | [return to table of contents](#)

PART NO.	CENTER HOLE DIAMETER - A	HUB HEIGHT - B
J - 1	1.256	.052 - .062
J - 2	1.256	.075 - .085
J - 3	1.256	.110 - .120
J - 4	1.256	.130 - .145
J - 5	1.256	.155 - .165
J - 32	1.269	.052 - .062



- All 2" J Series inserts are made of .0150 thick Soft Temper Steel with Electrolytic Tinplate Finish.
- Parts are Concentric within .010 with < .005 burr.
- Special build-to-order sizes are available on request.

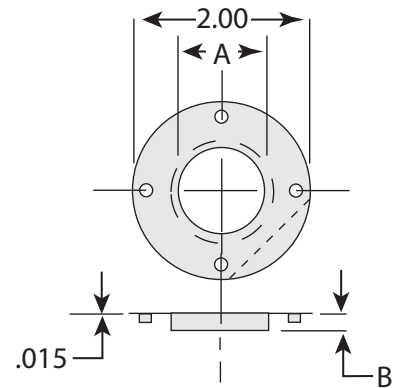


2" TINPLATE INSERTS / BUSHINGS

Used for Depressed Center Wheels, Cut-Off Wheels, Grinding Wheels and Flap Discs

page 6 | [return to table of contents](#)

PART NO.	CENTER HOLE DIAMETER - A	HUB HEIGHT - B	WEIGHT PER 1,000
A - 5	1.006 - 1.009	.055 - .062	12.5 lbs.
A - 6	1.006 - 1.009	.080 - .092	12.5 lbs.
A - 7	1.006 - 1.009	.115 - .124	11.7 lbs.
A - 8	1.006 - 1.009	.146 - .156	11.7 lbs.
A - 9	1.006 - 1.009	.176 - .186	11.7 lbs.
A - 16	1.006 - 1.009	.080 - .092	11.6 lbs.
A - 17	1.006 - 1.009	.115 - .124	11.2 lbs.
M - 1	.792 - .797	.110 - .120	12.5 lbs.



- Four 1/8" diameter equally spaced rough extruded nail holes on 1.687 bolt circle.
- (M - 1) Four 1/8" diameter equally spaced rough extruded nail holes on 1.703 bolt circle.
- (A-16 thru A-17) Flat edge to clear drive hole in parts.
- All 2 inch A and M Series Inserts are made of .015 thick Soft Temper Steel with Electrolytic Tinplate Finish.
- Parts are concentric within .01 with <.005 burr.
- Special build-to-order sizes are available on request.



SAFETY BACKS

Used for Cup Wheels

page 7 | [return to table of contents](#)

FIGURE	PART NO.	O.D.	CLASS 2B THREAD	WEIGHT PER 1,000 pcs.
1	25S	5.988 - 6.002	5/8 - 11	950 lbs.
2	23	5.210 - 5.215	5/8 - 11	910 lbs.
3	27	4.242 - 4.247	5/8 - 11	647 lbs.
4	29	3.402 - 3.407	5/8 - 11	432 lbs.
4	29 AT 18	3.402 - 3.407	5/8 - 18	432 lbs.
Not shown	N - 30	8.000	None	1,500 lbs.



- Safety Backs are flat to concave within .006 with <.003 rock.
- Specially designed nut has a coarse diamond knurl and a center channel to strengthen the bond of wheel.
- Made of .105 thick (12 gauge) CRC Q steel.
- Stocked in three (3) standard sizes for immediate shipment (within 48 hours).
- All models available on special order with 3/4 X 16 thread, 7/8 x 9 thread, 7/8 x 14 thread, 7/8 plain hole or 20 mm.

FIGURE 1



FIGURE 2



FIGURE 3



FIGURE 4



PRONGED INSERTS / SPIDERS

Used for Cup Wheels

page 8 | [return to table of contents](#)

FIGURE	PART NO.	O.D.	CLASS 2B THREAD	WEIGHT PER 1,000 pcs.
1	#10	2.297	5/8 - 11	180 lbs.
2	#11	3.250	5/8 - 11	297 lbs.
3	#11 Safety	4.195	5/8 - 11	310 lbs.
4	#14	2.880	5/8 - 11	307 lbs.



- Safety Backs are flat to concave within .006 with <.003 rock.
- Specially designed nut has a coarse diamond knurl and a center channel to strengthen the bond of wheel
- Made of .105 thick (12 gauge) CRC Q steel
- Stocked in four (4) standard sizes for immediate shipment. (within 48 hours).
- All models available on special order with 3/4 X 16 thread, 7/8 x 9 thread, 7/8 x 14 thread, 7/8 plain holde, or 20 mm.

FIGURE 1



FIGURE 2



FIGURE 3



FIGURE 4



ZINC FLANGES

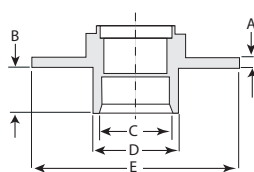
For Depressed Center Wheels and Flap Discs

page 9 | [return to table of contents](#)

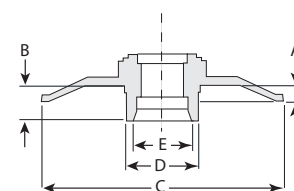
PART NO.	FITS WHEEL DIAMETERS	HUB DEPTH DIMENSION A	HUB HEIGHT DIMENSION B	DIAMETER DIMENSION C	HUB O.D. DIMENSION D	WEIGHT PER 1,000 pcs.
TZ 18	to 4" x 1/8"	.110 - .120	.375 - .385	1.375	.614 - .618	52 lbs.
TZ 14	to 4" x 1/4"	.110 - .120	.455 - .465	1.375	.614 - .618	52 lbs.
MZ 18	4" to 6" x 1/8"	.110 - .120	.375 - .385	2.000	.868 - .870	98 lbs.
MZ 14	4" to 6" x 1/4"	.110 - .120	.455 - .465	2.000	.868 - .870	98 lbs.
LZ 18	4" to 7" x 1/8"	.195 - .200	.355 - .365	2.800	.868 - .870	137 lbs.
LZ 14	4" to 7" x 1/4"	.195 - .200	.475 - .485	2.800	.868 - .870	143 lbs.
SZ 18	7" to 9" x 1/8"	.195 - .200	.355 - .365	3.200	.868 - .870	221 lbs.
SZ 14	7" to 9" x 1/4"	.195 - .200	.455 - .465	3.200	.868 - .870	228 lbs.

- All sizes (except TZ with 3/8-24 and 10mm) include 5/8-11 Class 2B threads (other sizes available) and fit type 27 and 28 depressed center wheels.
- Made of Die Cast Zinc and free from oil and other contaminants.
- Concentric within .010 with .005 burr.
- Shakespeares' Zinc Flanges are also known as Hubs.

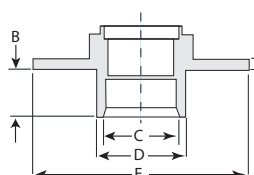
TZ18 / TZ14



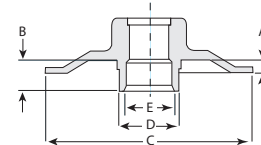
LZ18 / LZ14



MZ116 / MZ18 / MZ14



SZ18 / SZ14



page 10 | [return to table of contents](#)

PART NO.	DIAMETER	INSERT LENGTH	THREAD SIZE	WEIGHT PER 1,000 pcs.
H - 126	1/2"	3/4"	1/4 - 20	—
H - 204	1/2"	1"	3/8 - 16	—
H - 121	3/4"	1"	5/8 - 11	45 lbs.

- Other sizes available upon request.
- All sizes include Class 2B threads.
- Stocked in eleven (11) standard sizes for immediate shipment. (within 48 hours)
- Other sizes and threads are available on special order.



page 9 | [return to table of contents](#)

PART NO.	HEX SIZE	INSERT LENGTH	THREAD SIZE	PART NO.	HEX SIZE	INSERT LENGTH	THREAD SIZE
H - 116	1/2"	1/2"	1/4 - 20	H - 133	5/8"	3/4"	1/2 - 13
H - 119	1/2"	1/2"	5/16 - 24	H - 134	5/8"	1"	1/2 - 13
H - 208	1/2"	1/2"	3/8 - 16	H - 136	5/8"	1 - 1/8"	1/2 - 20
H - 217	1/2"	1/2"	3/8 - 24	H - 128	11/16"	1/2"	1/2 - 20
H - 117	1/2"	5/8"	1/4 - 20	H - 101	3/4"	1/2"	5/8 - 11
H - 222	1/2"	3/4"	3/8 - 24	H - 100	3/4"	3/4"	5/8 - 11
H - 209	1/2"	3/4"	3/8 - 16	H - 102	3/4"	1"	5/8 - 11
H - 118	1/2"	1"	1/4 - 20	H - 103	3/4"	1 - 1/8"	5/8 - 11
H - 221	1/2"	1"	3/8 - 24	H - 104	3/4"	1 - 1/4"	5/8 - 11
H - 211	1/2"	1"	3/8 - 16	H - 106	3/4"	1 - 1/2"	5/8 - 11
H - 223	1/2"	1 - 1/8"	3/8 - 24	H - 105	3/4"	1 - 3/4"	5/8 - 11
H - 224	1/2"	1 - 1/4"	3/8 - 24	H - 107	3/4"	2"	5/8 - 11
H - 220	1/2"	1 - 1/2"	3/8 - 24	H - 112	13/16"	1"	5/8 - 11
H - 214	9/16"	3/4"	3/8 - 24	H - 111	13/16"	1 - 1/4"	5/8 - 11
H - 215	9/16"	1"	3/8 - 24				

- All sizes include Class 2B threads.
- Other sizes are available on special order.



page 12 | [return to table of contents](#)

FIGURE	PART NO.	DESCRIPTION	CLASS 2B THREAD	WEIGHT PER 1,000 pcs.
1	A - 100	SAS14 Arbor Screw - Reg.	1/4 - 28	28 lbs.
2	A - 101	SAS 38 Arbor Screw - Reg.	1/4 - 28	28 lbs.
1	A - 114	SAS 14 Arbor Screw - Long	1/4 - 28	29 lbs.
2	A - 116	SAS 38 Arbor Screw - Long	1/4 - 28	29 lbs.
3	A - 103	SGWA 1438 Arbor	1/4 - 28	48 lbs.

- SGWA 1438 Arbor fits 1/4" or 3/8" chucks.
- SGWA 1438 four (4) screw sizes are available.
- Made of Black Anodized Steel
- Stocked in two (2) standard sizes for immediate shipment (within 48 hours).

FIGURE 1



FIGURE 2

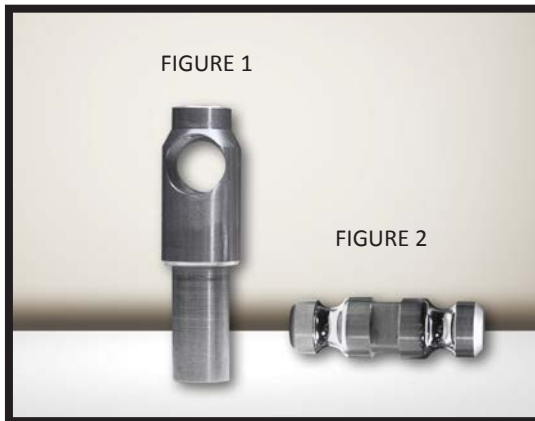


FIGURE 3



page 13 | [return to table of contents](#)

FIGURE	PART NO.	DESCRIPTION
1	Z - 701	Roll Over Tool Holder
2	Z - 700	Carbide Roll Over Tool
3	Z - 702	Bolster Plate with 1" Nest Installed



Roll Over Tool Holder (Figure 1)
Carbide Roll Over Tool (Figure 2)



Roll Over Tool Holder and Carbide Roll Over
Tool assembled

(Figure 3)
Bolster Plate



PART NO.	DESCRIPTION
# 50	Reusable Adapter Kit
#50 - 000	Zinc Flang Only
#50 - 001	Pad Nut Only
#50 - 002	Allen Wrench Only
#50 - 003	Washer Kit Only (2 each)
View Current Price List	

#50 Kit & Components



PART NO.	DESCRIPTION
#59 - 000	Steel Flange with 7/8" Hole
#59 - 001	Flat Nut
#59 - 012	Throw Away Adapter 1/8"
#59 - 018	Throw Away Adapter 3/16"
#59 - 025	Throw Away Adapter 1/4"
#59 - 037	Throw Away Adapter 3/8"
#59 - 050	Throw Away Adapter 1/2"
#59 - 100	Throw Away Adapter 1"
View Current Price List	

#59 Hub, Flat Nut and Various Mounting Nuts



HUBBING MACHINE SYSTEMS

Please contact Shakespeare at TOLL FREE 888-399-7117 to ask any questions , receive a quote or request a digital machine systems brochure for our 'powerful' hubbing machine systems.

HB375 - SEMI-AUTO HUBBING MACHINE

The HB375 Semi-Auto Hubbing Machine consists of a turntable with 8 nests for hex end of hub. Has adjustable index time depending on operator.

- Assembles 5/8 - 1 1/2 die cast hubs to your products
- Relieves operator fatigue
- Resolves assembly inconsistency
- Reduces Assembly costs

Uses a controlled application of 2-part epoxy resulting in:

- Mess and inconsistency of manual application
- Lockwashers / Epoxy bonds hub to product eliminating cost 2-3 times less
- Production rates between 900 -1000 per hour (depending upon product)



HB375 - SEMI-AUTO HUBBING MACHINE

HB150 - MANUAL HUBBING MACHINE

The HB150 Manual Hubbing Machine consists of electric motor driven hydraulic powered drill for hub roll over operation. Manually loaded and manually activated cycle then manually unloaded. Cycle start signal with optional output for customer supplied epoxy dispense operation

- Assembles 5/8 - 1 1/2 die cast hubs to your products
- Assembles Type 27 and 29 products
- Replaces drill presses and manual labor associated with them
- Relieves operator fatigue
- Resolves assembly inconsistency
- Reduces assembly costs
- Perfect machine for lower volume

Uses a controlled application of 2-part epoxy resulting in:

- Mess and inconsistency of manual application
- Lockwashers / Epoxy bonds hub to product eliminating cost 2-3 times less
- Production rates between 200 - 250 per hour (depending upon product)



HB150 - MANUAL HUBBING MACHINE

DRILLING MACHINE SYSTEM

Please contact Shakespeare at TOLL FREE 883-399-7117 to ask any questions, receive a quote or request a digital machine systems brochure for our 'powerful' drilling machine system.

"What the Big Boys Use."

Shakespeares SB-250V - Variable Speed Vertical Drill Machine



Model SB-250V Drill Press

Photo depicts THE MODEL SB-250V installed with the 'optional' Mist System (Micro Drop).

The SB-250V is a Heavy-Duty Variable Speed Floor Model Drill Press. It's depth is adjustable and can be preset for repetitious drilling operations to a predetermined depth. It has conveniently placed controls including an E-Stop button, low voltage protection and a belt cover interlock switch for safety. The SB-250V has an adjustable plexiglas chip/chuck guard and the bit changes quickly with a chuck key.

APPLICATIONS

PRODUCTION WORK AND MAINTENANCE WORK IN THE REPAIR SHOP OR TOOL ROOM.

- Large tilting table that can be swiveled or rotated on the column for a variety of drilling operations. Height adjustable table with locking mechanism.
- Quick release belt tensioning for fast speed changes. Three-pulley system and variator for high torque and multiple speed ranges. Pulleys are drilled for best balance.
- Automatic gear box with adjustable depth stop, then spring return.
- Speeds and feeds chart for materials and bit size, for easy reference and optimum operation.
- Drill press comes complete with chuck, keys, wedges, owners-manual and a 1-year warranty. All you do is add power.
- MT3 (Morse Taper) accepts most standard size bits or adapters.
- Large column diameter for added rigidity.
- Compact size to minimize floor space.
- Precision ground table and base with Tee slots for clamping and fixturing.

SPECIFICATIONS

Maximum Work Diameter:	18"
Drilling Capacity (in.):	1"
Spindle Travel (in.):	5"
Spindle Feed:	Automatic / Manual
Spindle Taper:	MT3
Spindle Speeds:	Variable speeds via 3 pulley system
Speed Range:	68 – 1380 RPM
Column Diameter (in.):	3-5/8"
Motor:	1-1/2 HP 110 Volt / 1 Phase / 6 amp service
Table Type:	Tilting, rotating swivel table with tee slots
Table Size:	13-3/4" x 13-3/4"
Base Size:	23-5/8" x 15"
Spindle to Table (in.):	28-3/8"
Spindle to Base (in.):	49-1/4"
Overall Height:	71"
Weight:	500 Lbs
Lubricant:	Mist-type unit optional